

## SCALES II

NOW we learn the FULL SCALE::

the FULL MAJOR SCALE = [W,W,H,W,W,W,H]

C+ ::

Playing the full scale features the CROSS-UNDER move (position shift by moving thumb)

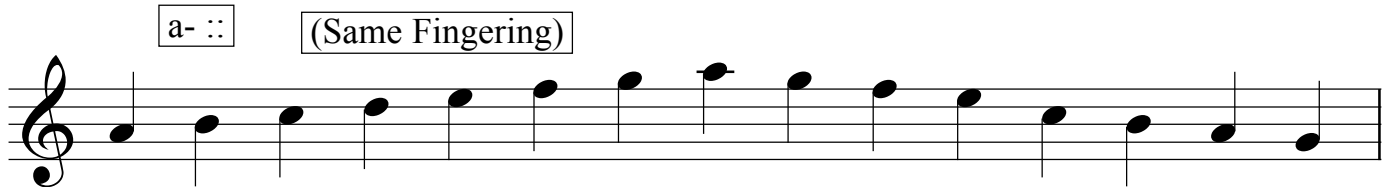
R.H. 1 2 3 / 1 2 3 4 5 4 3 2 1 / 3 2 1

L.H. 5 4 3 2 1 / 3 2 1 2 3 / 1 2 3 4 5

Play one hand at a time, then together. When you first play together you can do it in CONTRARY MOTION.

CONTRARY MOTION is very natural because it means MIRROR-LIKE and our hands are made that way. To perform Contrary Motion you put BOTH THUMBS on a C (for example) and go in opposite directions -- following fingering (123(shift)12345 then back). When doing other scales don't forget to keep the key signature (sharps and flats) - (refer to Key Signatures)

The FULL MINOR SCALE = [W,H,W,W,H,W,W]



This is called the NATURAL MINOR. This is the Minor Scale we with will deal with at first. Later we will learn why it is called the Natural Minor scale and learn about the other types of minor scales.

There are a number of scales one can do before the fingering changes::

Some Major Scales

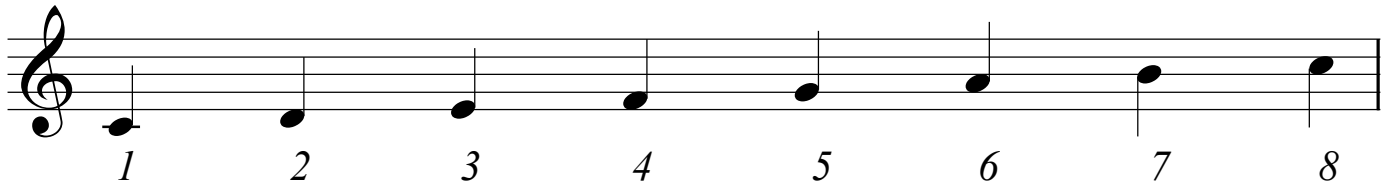
G+ :: D+ ::

A+ :: E+ ::

Notice how each scale is a PERFECT FIFTH up from the last and ONE SHARP is added to the scale pattern each time (refer to the CIRCLE OF FIFTHS).

NOTICE how the MINOR SCALES being on the 6th scale degree of the Major for this reason they are called RELATIVE scales (the relative Minor of the Major)

To describe SCALE DEGREES we merely put a number to each tone of the scale  
Here are the scale degrees of C Major::



So you can see how A MINOR is the RELATIVE MINOR of C MAJOR because it begins on the 6th scale degree of C MAJOR::

-- they share the same KEY SIGNATURE = All Naturals - or all white notes  
(refer to Circle of Fifths)

Here are some more Natural Minor scales - their relative major scales are noted - they all share the same fingering as before::

Four musical staves in treble clef, each showing a natural minor scale. Each scale is labeled with its name and its relative major scale in a box above it:

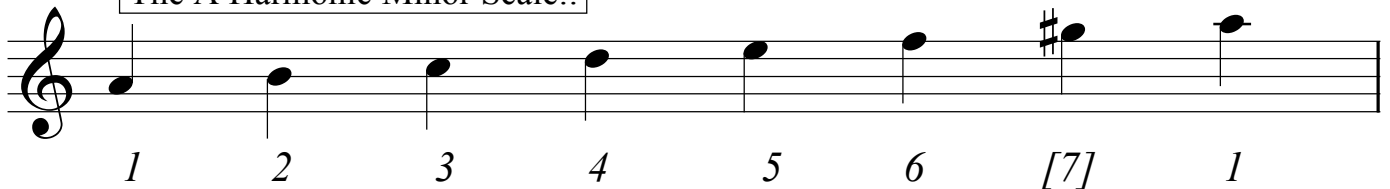
- Staff 1: e- :: (rel of G+)
- Staff 2: c- :: (rel of Eflat+)
- Staff 3: d- :: (rel of F+)
- Staff 4: g- :: (rel of Bflat+)

The two variations of minor scales are very simple::  
We merely make changes to the top part of the scale for logical musical reasons

### The HARMONIC MINOR SCALE

To create a HARMONIC MINOR SCALE we RAISE the 7th scale degree::

The A Harmonic Minor Scale::

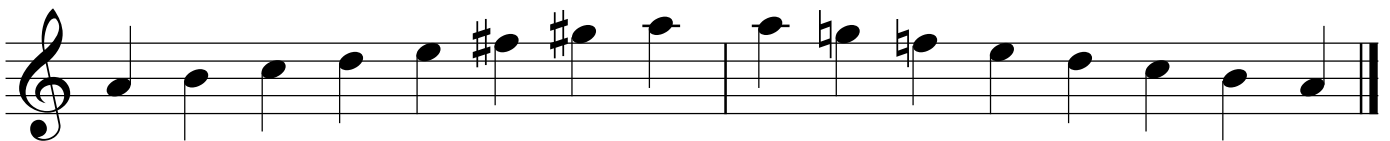


The reason for this change is due to HARMONY which will be explained later -- it is to make a RAISED 7th scale degree for the FIVE CHORD (refer to HARMONY sections)

### The MELODIC MINOR SCALE

To create a MELODIC MINOR SCALE we RAISE the 6th and 7th scale degrees as we go up and LOWER the 7th and 6th scale degrees as we go down::

The A Melodic Minor Scale::



The reason for this change is due to the natural path of MELODY. As the music flows upwards, the tones are raised. As the music flows downwards, the tones are lowered.